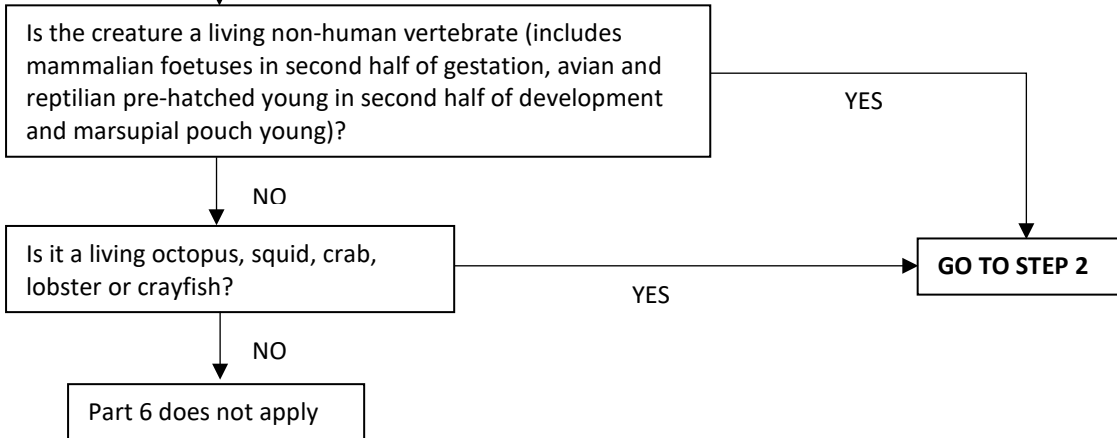
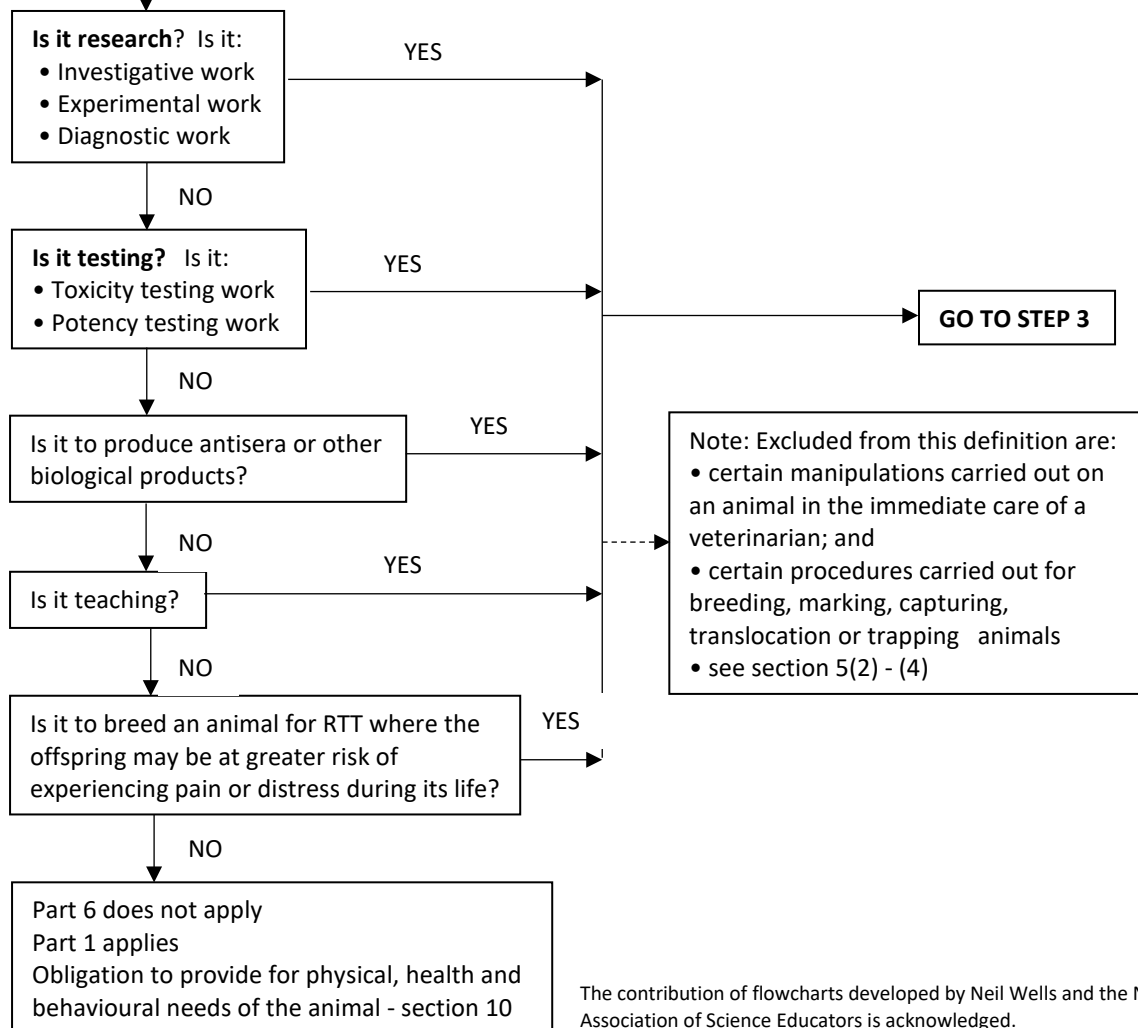


## NEED FOR ETHICAL APPROVAL

### STEP 1: DOES THE WORK INVOLVE AN ANIMAL?



### STEP 2: IS THE WORK RESEARCH, TESTING OR TEACHING (RTT)?



The contribution of flowcharts developed by Neil Wells and the NZ Association of Science Educators is acknowledged.

